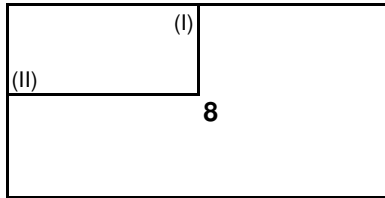


# INSTALLATION PLAN - C OFFEE MACHINES

## PLAN VIEW FOR DRILLING COUNTER



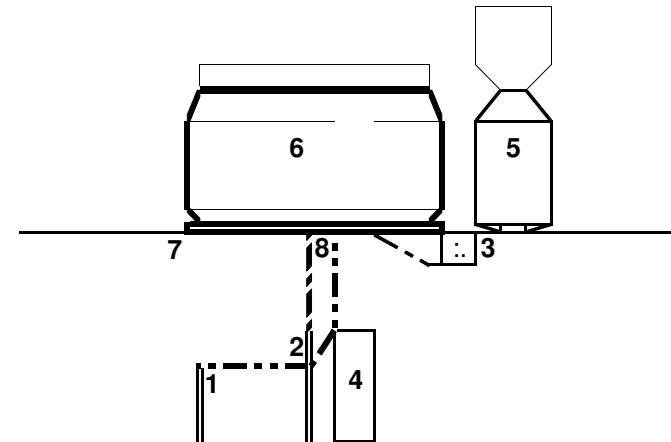
(I) DEPTH FROM BACK OF MACHINE TO HOLE

(II) LENGTH FROM SIDE OF MACHINE TO HOLE

WORK OUT LOCATION OF COFFEE MACHINE ON BAR COUNTER AND MEASURE ACCORDINGLY. HOSES FEED FROM CENTRE OF COFFEE MACHINE THROUGH DRILLED COUNTER (SEE DIAGRAM OPPOSITE).

|                |           |            |
|----------------|-----------|------------|
| <b>1 GROUP</b> | I : 110MM | II : 235MM |
| <b>2 GROUP</b> | I : 110MM | II : 300MM |
| <b>3 GROUP</b> | I : 110MM | II : 400MM |
| <b>4 GROUP</b> | I : 110MM | II : 500MM |

|   |  |
|---|--|
| 1 | 3/4" B.S.P WASHING MACHINE VALVE FOR MAINS WATER |
| 2 | 1.5" (MINIMUM DIAMETER) STAND PIPE FOR WASTE     |
| 3 | POWER CONNECTION FOR COFFEE MACHINE              |
| 4 | WATER SOFTENER (DSU) IF REQUIRED                 |
| 5 | GRINDER - 13 AMP SOCKET REQUIRED                 |
| 6 | COFFEE MACHINE                                   |
| 7 | COUNTER TOP KNOCKOUT DRAWER                      |
| 8 | HOLE IN COUNTER: 2" DIAMETER                     |



**POWER CONNECTIONS WITHIN 1 METER BEHIND OR BENEATH THE MACHINE. (WITH EASY ACCESS TO THE POWER POINT).**

(SEE SERVICES OVERLEAF FOR SPECIFIC POWER REQUIREMENTS ON DIFFERENT SIZE MACHINES)

**WATER & WASTE CONNECTIONS DIRECTLY BENEATH THE MACHINE.**

ALL SERVICES, INCLUDING HOLE IN BAR COUNTER MUST BE IN PLACE PRIOR TO ENGINEER ARRIVING TO DO THE INSTALLATION.

IF YOU HAVE ANY QUERIES PLEASE CALL

**fracino** 0121 328 5757